

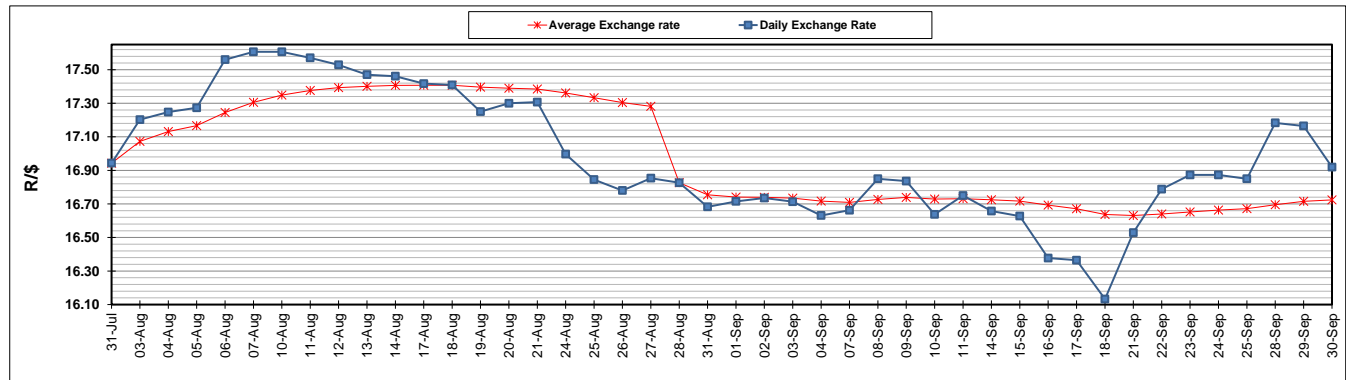
	PETROL 95 ULP	PETROL 93 ULP & LRP	DIESEL 0.05%	DIESEL 0.005%	ILL. PAR.
GAUTENG PUMP PRICE (SA c/l) AS FROM 02/09/2020	1,518.000	1,489.000	-	-	-
WHOLESALE PRICE (SA c/l) AS FROM 02/09/2020	-	-	1,327.560	1,331.960	716.828
SINGLE NATIONAL MAXIMUM RETAIL PRICE	-	-	-	-	899.000
BASIC FUEL PRICE - 30/09/2020 (SA c/l)	537.030	525.279	491.005	492.660	451.063
PRESS RELEASE CONTRIBUTION TO BFP 02/09/2020 - 30/09/2020 (SA c/l)	565.470	546.470	576.630	581.030	512.128
UNIT OVER/(UNDER) RECOVERY - 30/09/2020 (SA c/l)	28.440	21.191	85.625	88.370	61.065
AVERAGE BASIC FUEL PRICE 28/08/2020 - 30/09/2020	534.444	523.798	489.677	491.696	439.277
AVERAGE UNIT OVER/(UNDER) RECOVERY 28/08/2020 - 30/09/2020	31.564	23.210	89.578	91.959	76.101

### ANALYSIS MOVEMENT OF AVERAGE OVER/(UNDER) RECOVERY

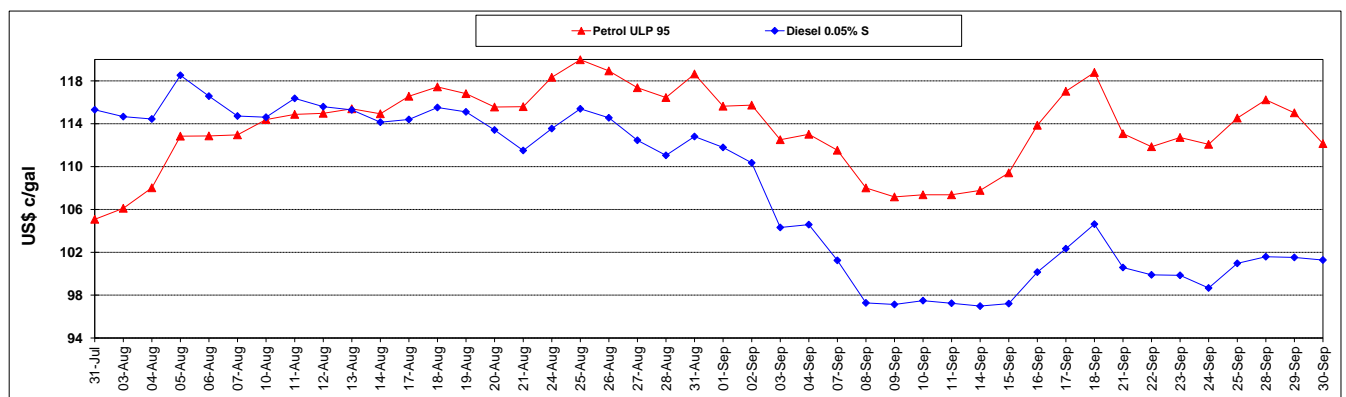
	PETROL 95	PETROL 93	DIESEL 0.05%	DIESEL 0.005%	ILL. PAR.
- MOVEMENT IN INTERNATIONAL PRODUCT PRICES	13.755	5.755	73.260	75.574	61.463
- MOVEMENT IN EXCHANGE RATE	17.809	17.455	16.318	16.385	14.638
AVERAGE UNIT OVER/(UNDER) RECOVERY 28/08/2020 - 30/09/2020	31.564	23.210	89.578	91.959	76.101

**R/\$ EXCHANGE RATE - (R/\$16.9193 - 30/09/2020)**

### EXCHANGE RATE USED IN BASIC FUEL PRICE



### INTERNATIONAL PRODUCT PRICES OF BASKET USED IN BASIC FUEL PRICE



### BASIC FUEL PRICE IN SA CENTS PER LITRE

